



GAT MONTHLY MEMBERSHIP PROGRESS REPORT

Results as of: 3/31/2023

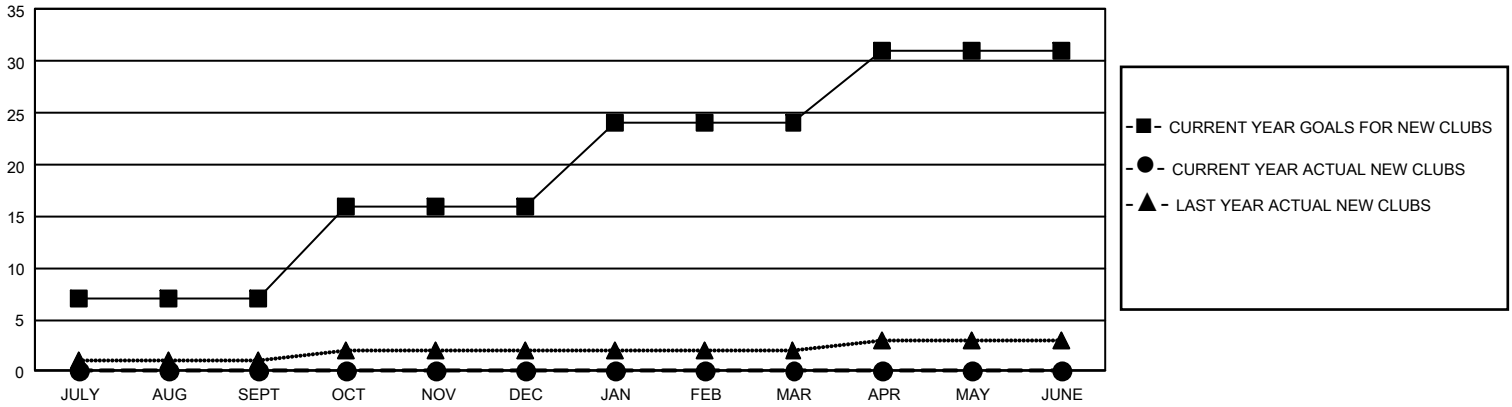
GMT Constitutional Area 1, Group J

REPORT DOES NOT INCLUDE CLUBS IN UNDISTRICTED AREAS.

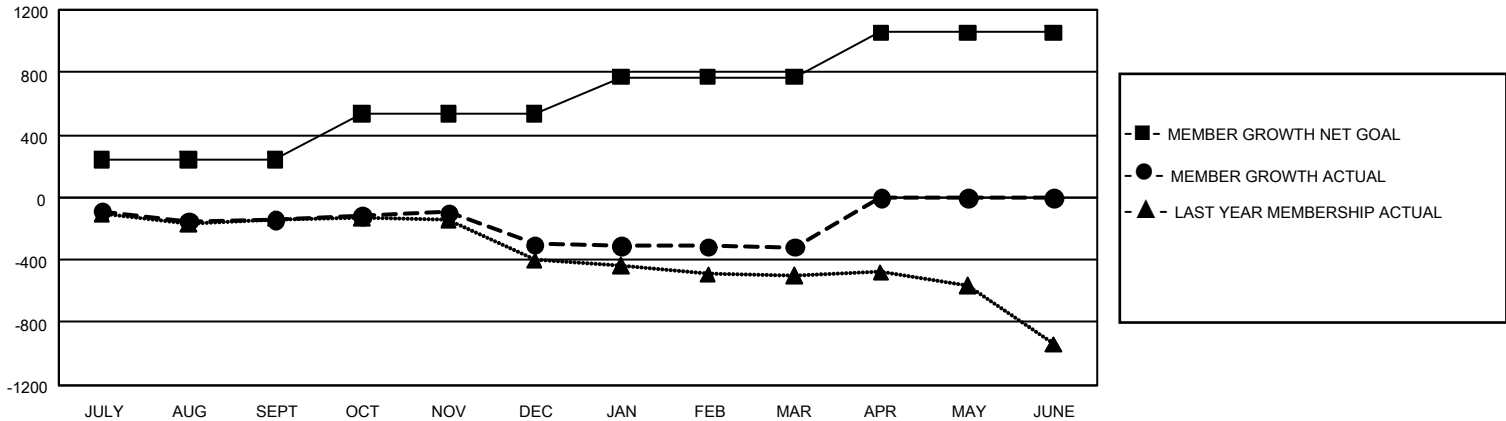
Clubs			
RESULTS FOR 2022-2023			
QUARTER	NEW CLUB GOAL	NEW CLUBS	DROPPED CLUBS
JULY/AUG/SEPT	21	0	5
OCT/NOV/DEC	27	0	4
JAN/FEB/MAR	24	0	7
APR/MAY/JUNE	21	0	0

Members			
RESULTS FOR 2022-2023			
QUARTER	MEMBER GROWTH NET GOAL	MEMBER GROWTH ACTUAL	DROPPED MEMBERS ACTUAL (including transfers)
JULY/AUG/SEPT	241	420	522
OCT/NOV/DEC	297	479	597
JAN/FEB/MAR	231	531	492
APR/MAY/JUNE	287	0	0

GOALS AND ACTUAL NEW CLUBS CUMULATIVE



GOALS AND ACTUAL MEMBERS CUMULATIVE



DROPPED CLUBS: 16	423 CLUBS OF 896 ADDED 1 OR MORE NEW MEMBERS	<u>GENDER DISTRIBUTION</u>	
		MALE 14,132 (69.36%) FEMALE 6,241 (30.63%) NON BINARY 1 (0.00%) PREFER NOT TO ANSWER 1 (0.00%)	
<u>DROPPED MEMBERS</u>		CLICK HERE FOR CUMULATIVE MEMBERSHIP DATA	TOTAL FAMILY UNIT MEMBERS 4,035
DECEASED 259 CLUB CANCELLED 44 OTHER 1,307 TOTAL 1,610	FAMILY MEMBERS PAYING HALF DUES 2,058		